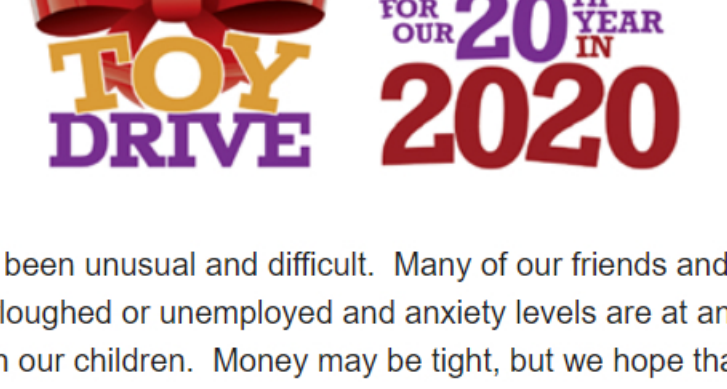


Table of Contents

[20th Annual Toy Drive](#) | [COVID-19 is gone!](#) | [Project Spotlight](#) | [Parlee's Corner](#)

In the Community

TeamPAR's 20th Annual Toy Drive in 2020!



This year has been unusual and difficult. Many of our friends and neighbors have been furloughed or unemployed and anxiety levels are at an all-time high, especially with our children. Money may be tight, but we hope that will not prevent you from participating in this year's toy drive.

The kids need us! Let's raise their spirits and show them (and their mom's) that 2021 will be brighter!

Here is the plan...

- We have selected 20 items on [Amazon](#). Our goal is to receive 20 of each of these items to donate to the clients in need @ JBWS.
- Of course, you can also collect new items (toys & essentials) and the Selfless Elves @ TeamPAR will collect them from your office (as we have always done in years past.)

Click and ship 1 item... Click and ship 20 items... Click and ship whatever you can.

How about...

- 20 Gift Cards!
- 20 Sets of Crayons & Coloring Books!
- 20 Slinkies!
- 20 Sets of Hats & Gloves!
- 20 Puzzles!
- 20 Assorted Boardgames!
- 20 Craft Kits!
- 20 Baby Dolls!

It all adds up and every donation counts ---- **BIG TIME.**

Caring is sharing. All donations stay in NJ. We are truly neighbors helping neighbors. Thank you for helping TeamPAR make a difference.

Chief Selfless Elf,
Karen



[Click here for Amazon Wish List Shopping!](#)

Featured Blog

COVID-19 is Gone! (& the Future of CRE...)



Let's fast forward to six months from now, the one-year anniversary of the mandatory shutdown that shocked all of us – what will the world look like? Although we can't see the future, we have a few predictions on the CRE trends we might be seeing in the coming months. Here are a few trends to keep in mind as we start to navigate our new normal.

[Read More](#)

Project Spotlight

PG Chambers School, Resource Room

PAR Solutions was selected to transform the Resource Room for this private, special needs school. The color palette and rainbow floor pattern was created by TeamPAR to add joy and imagination to this important room that is both a focal point within the school and is used in abundance. The painting, flooring, window treatments and case goods were all supplied and installed by TeamPAR.



Client Testimonial:

Hi Karen and Alexa. I am back from my couple of days off and I simply want to say, "Thank you!" The resource room looks fabulous! We held health and safety in-service meetings there yesterday and today so all of the staff got to see it. There have been rave reviews! We've also gotten a lot of positive feedback about the shades.

Thanks so much!

Patty

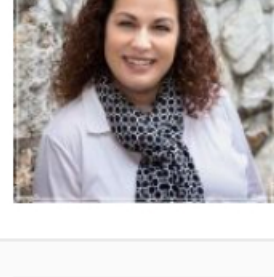


PROCUREMENT

We source, identify, supply and install the best products for your space.

Parlee's Corner

TeamPAR offers various services... From interior design & project management to supplying and installing flooring. The service our clients find invaluable is our procurement process. We handle everything! We select the pieces and customize their finishes to fit your culture and budget. We handle all deliveries and installations and hand you a finished space you can move into. We create custom branded entrance mats, select and install plantings and artwork too! It feels like magic to our clients, but honestly, our attention to detail and pride we take in transforming our client's environments is actually TeamPAR's "secret sauce."



TeamPAR President, Karen Rossilli-Kiefer is an IFMA Certified FMP. Understanding what drives you to succeed and how to help you achieve your goals is our priority as your Educated Dealers. Lean on us, we are ready to help.

The only thing we do better than installing floors is building relationships.

