



Biophilia and it's Effect on Students

biophilia – noun; bio·phil·ia: *“love of life;” our innate need to connect with nature. Immersing ourselves in nature has proven biological and emotional benefits.*

Biophilic design is an emerging and extremely effective trend in school design. In a nutshell, learning environments are inspired by nature, but the benefits they derive are broader and far-reaching.

It is proven that connecting with nature has biological and emotional benefits. What if our school buildings could do the same?

5-18%
increase in
test scores*

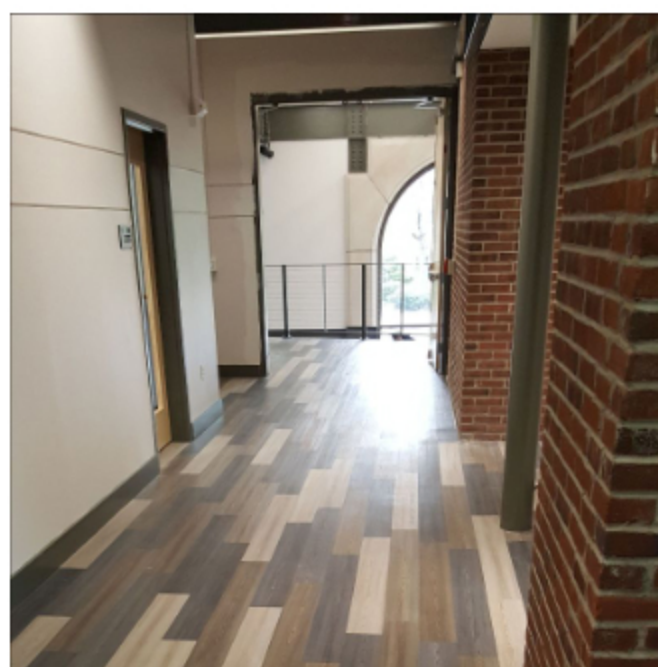
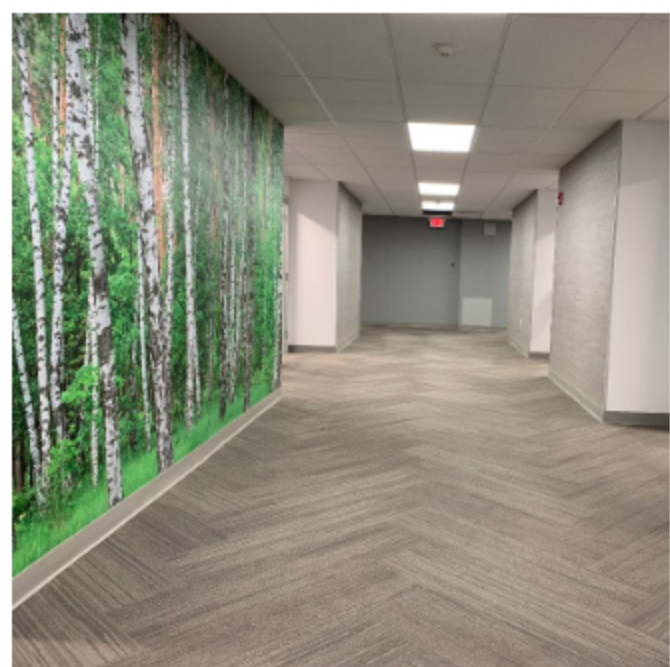
20-26%
faster
learning
rates*

So, when we incorporate nature into our surroundings, students are happier, and they perform better. Simple. However, today’s students spend more time inside than all previous generations, thus, biophilic design is in greater need now to help foster a balance.

[LEARN MORE](#)

* as published by Interface.

Biophilia in School



Biophilic design incorporated into The Craig School in Mountain Lakes, NJ, and Blair Academy in Blairstown, NJ.

What Our Clients Are Saying...

“
TeamPAR just helped us renovate our mini-motor gym. They listened to our needs and created a beautiful and practical space. Every member of the team is professional and responsive. Love working with them.
Patty Sly • Executive Director, P.G. Chambers School, Cedar Knolls, NJ

“
What can I say about Team Par? When our school started doing renovations, we were new to the game. Team Par came in, gave us expert guidance and executed our project seamlessly, on budget and on time! We know there were bumps in the road but they were smoothed out before we even had a chance to worry. Companies like this don't come along everyday- we were very lucky to find such an amazing team. Our school not only received excellent service but we have made a bunch of new friends in the process. Win, win! We are now embarking on our second renovation project and are excited and confident that Team Par will again excel.
Karen Meisinger - CFO, The Craig School

PARSOLUTIONS

Master Planning & Visioning Services



- Staff and student interviews to compile an unbiased snapshot of wants and needs
- Cost estimating for budget and fundraising purposes
- Introduction to cutting-edge and advanced environmental trends to improve your students' & staff's experiences

Selection of All Design Finishes: From Flooring to Lighting to Furnishings

- Integrating Biophilic Design and a student-centric environment to improve performance
- Select color palettes to promote emotional intelligence




Provide Room Layouts & A Finish Schedule



- Use deliverables to execute your local bidding utilizing your trusted relationships
- Design delivery procurement and construction management services

[CONTACT TEAMPAR FOR A CONSULTATION](#)

[VIEW OUR PORTFOLIO](#)



Karen Rossilli-Kiefer is an IFMA Certified FMP. Understanding what drives you to succeed and how to help you achieve your goals is our priority as your Educated Dealers. Lean on us, we are ready to help.

