

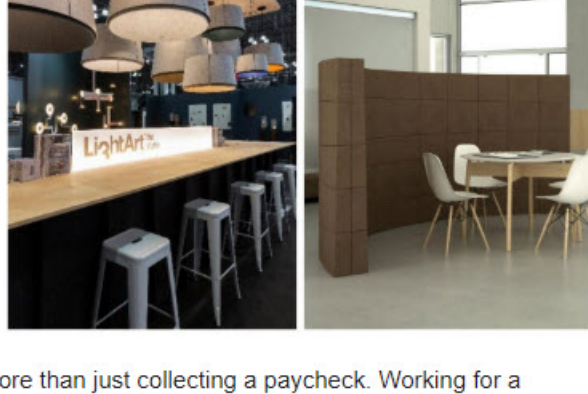
Table of Contents

[The Micro-Office & Community Driven Design](#) | [Featured Blogs](#) | [Karen's Hot Trends from Trade Shows](#)

The Micro-Office and Community Driven Design

The office environment is forever evolving. Some trends are fleeting, and some are here to stay. One size does not fit all, and here is why...four generations are co-existing in the workplace and the size of a typical office environment is shrinking.

Generation X and the Boomers are in charge and value different things than the Millennials and Silent Generation that flank them. Before long, Generation Z will be on the scene! Work ethics and what is deemed important vary among these generations, but the biggest factor that divides



the workplace is culture. Going to work today is more than just collecting a paycheck. Working for a company that shares your values and evokes a company culture you can be proud of is highly coveted.

So, it is no surprise that designing office space to accommodate all these nuances is not an easy task, but click below for some touchpoints that are widely understood and sought after, regardless of the location or population that occupies it.

[Read More](#)

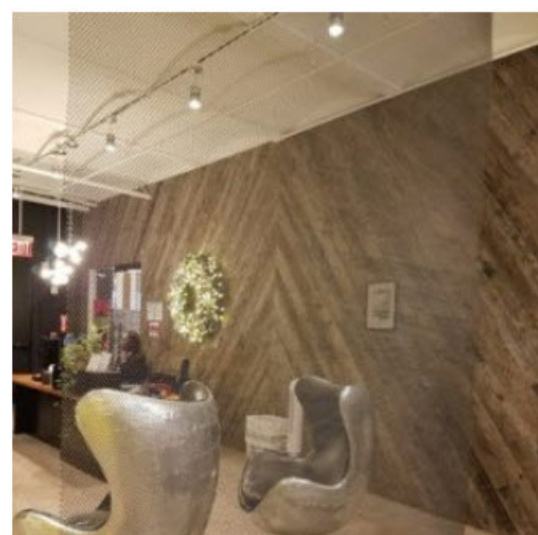
Featured Blogs



Biophilic Design - Naturally Reclaiming Our Environment!

Biophilic Design is an innovative way of designing the places where we live, work, and learn. Sounds so mysterious... what does it mean? Simply, Biophilic Design is the conduit for satisfying the need for contact with nature in the modern built environment.

[Read More](#)



Riding the Millennial Wave: Innovation Labs

TeamPAR had the privilege of touring the innovation lab in NYC created by ADP, known as **Lifion**. Lifion has designed a unique office environment that speaks to the Millennial generation. This environment attracts technically savvy talent to invent the next big thing in Human Capital Management.

[Read More](#)



What is a Wellness Room?

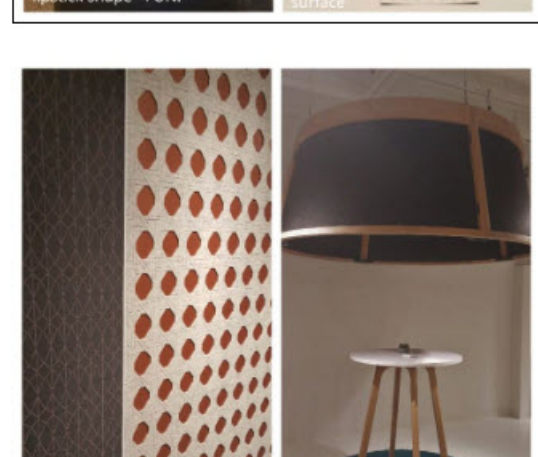
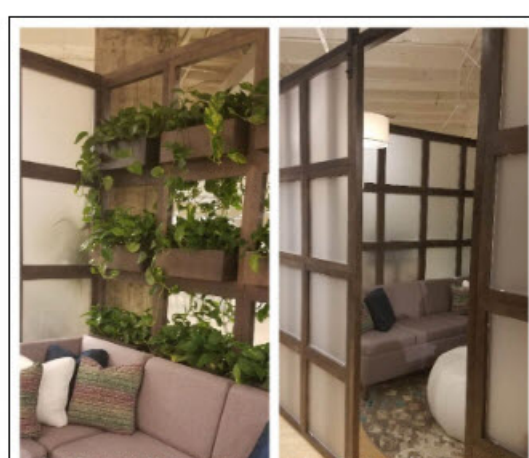
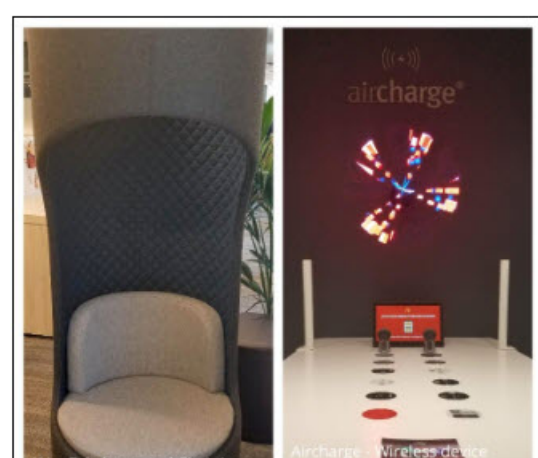
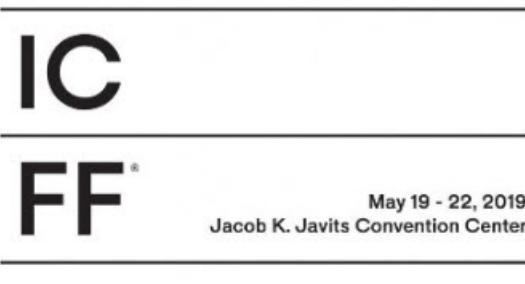
There isn't a singular definition for a wellness room but they are becoming more and more commonplace in Corporate America.

By law, Section 7 (r) of the Fair Labor Standards Act requires adequate break time for nursing mothers for one year after the child's birth and the allocated room must be other than a bathroom and shielded from view.

[Read More](#)

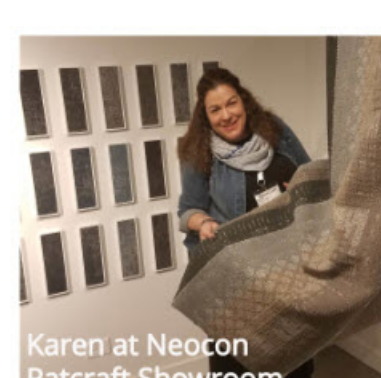
In the News

Tradeshows: Hot Stuff!!

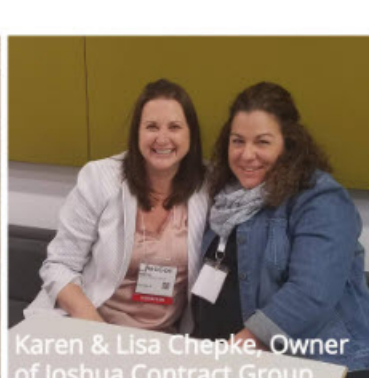


Karen's Top Trends from this year's trade shows!

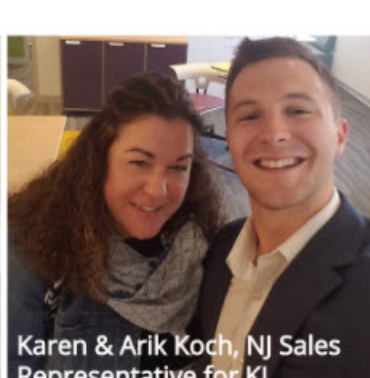
1. Tarkett - Printed LVT
2. Nook - Mobile meeting space
3. Vitra - Organic green walls in artful compositions
4. Dauphin - Space cubes for open office environments
5. KI - Felt acoustical chair - lipstick shape. Fun!
6. Aircharge - Wireless device charging built into any table
7. Indiana Furniture - Meeting space with interchangeable plant wall
8. Wolf Gordon - Etched felt walls. Delicious!
9. Darran - Thinking quietly adjustable hood



Karen at Neocon Patcraft Showroom



Karen & Lisa Chepke, Owner of Joshua Contract Group



Karen & Arik Koch, NJ Sales Representative for KI



TeamPAR President, Karen Rossilli-Kiefer is an IFMA Certified FMP. Understanding what drives you to succeed and how to help you achieve your goals is our priority as your Educated Dealers. Lean on us, we are ready to help.

The only thing we do better than installing floors is building relationships.

