



The only thing we do better than installing floors is building relationships.

LEARN MORE

## Announcing Alexa & Karen's 12 Favorite Things

**PARflooring** & **PARsolutions** continually service clients through creative cost controlled interior solutions that increase ROI & value engineer finishes without compromising quality. **TeamPAR** hounds the industry to bring innovation to the facilities it services. Without further ado, we give you **Alexa & Karen's 12 Favorite Things**. Every Tuesday through November 24th, be sure to keep an eye out for our weekly favorite and learn how partnering with **TeamPAR** can bring you stunning flooring and unique designs.

### Alexa & Karen's Favorite Things: #1- #4

#### #1 [LokDots by Shaw Industries: What are They?](#)

Innovations are commonplace these days in the commercial flooring industry. This is driven by the marketplaces desire to be "green" and also the need to find cost effective solutions for aging buildings. **LokDots** is a "cool" innovation that is green & solves sub floors issues in moisture ridden or aging buildings. [READ MORE](#)



#### #2 [LED Fireplaces: Not just for residential usage anymore!](#)



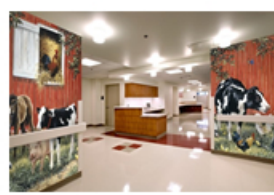
Whether you are creating a C-Level Suite.... An open office environment.... An oncology medical facility.... Day spa or elderly long-term care facility: how people feel in the space does matter. Small additions to a space can make big impacts on performance and well-being. Colors, artwork, plants, water features and even a fireplace can add depth and ambiance - altering moods from one of fear or melancholy to a place of comfort. **Modern Flames** offers an array of electric fireplaces from traditional to ultra-modern that could enhance any environment. [READ MORE](#)

#### #3 [Signaflor Poured Polyurethane Flooring](#)

**PARflooring** was ask to find a solution to an aging rubberized sports flooring in the field building of a prestigious private school, **Kent Place**, in Summit, NJ. **TeamPAR** chose to partner with **Signature Sports Flooring** and selected the creative solution **Signaflor** that is a poured polyurethane flooring. [READ MORE](#)



#### #4 [Murals](#)



**Murals Your Way** has been a fantastic partner to **TeamPAR** and its **PARsolutions** clients. Evoke emotions - provide a focal point - or just dare to be different! Minimal investment with maximum exposure and reward. Murals are an underutilized gem in the commercial design community. [READ MORE](#)

## Karen's Corner

As the lazy months of summer draw to a close and we send our children back to school I find that I too return to my desk with a renewed sense of purpose. Learning is not just for children and having a purpose and achieving goals before we all face another New Year is very satisfying. Education is key, not only for the youth among us but for our survival and relevance in this fast paced, ever changing workforce. Acknowledge what you do not know or need to brush up on and seize the opportunity to prepare for your future today!



## Case Study: College Dormitory Topic: Hot Tiles...Oh my!

Aging buildings in NJ --- this story is not new --- but, finding and sharing a safe and cost effective solution when asbestos tile is encountered is a story worth telling.



**PARflooring** is known for **value engineering & specifying** the **RIGHT** high performance flooring products on a budget. When we visited this college dormitory to review conditions it was obvious that asbestos tile was covering approximately 70% of the building. Let's side step for a moment.... asbestos tile, when encountered, is not always harmful. Asbestos tile is harmful when it is in powder form and airborne.

With that being said, **PARflooring** understood that it was safe to install new materials over the existing tile because it was in fine shape.

We needed to ensure the tile remained safe and secure and determined a floating installation of **Luxury Vinyl Planking** would add visual warmth and provide ease of maintenance for the bedrooms. It is also acoustically superior to traditional VCT that would be today's standard for asbestos tile replacement. **Shaw Industries**, **Array Luxury Vinyl Click System**, can take the abuse.

Remember, this is a unisex dormitory on a tight budget where 4 seasons worth of foot traffic plague the longevity of its overall appearance. Thus, **PARflooring** chose **Mannington Commercial** carpet tile in quality **Stringworks II** for the common corridors for these reasons:

1. 100% Post-industrial Type 6,6 Nylon yarns are used - **VERY "GREEN"**
2. Its multi-color textured patterned loop with its all over linear pattern is **FUN** and helps to disguise foot traffic and spills long term
3. Stain Resistant & Bleach Resistant
4. Lifetime Wear & Carpet Tile Backing Warranties
5. Has an impermeable moisture barrier which helps eliminate odors



**TeamPAR: PARflooring & PARsolutions** enjoys solving problems and adding value to clients and their facilities. Our educated methods and decades of experience enable us to impart creative solutions and remain within your budget.

For more information, contact us today at 973-292-0089.

Cost Controlled Interiors...TeamPAR helps professionals decide what to buy.